



# PROFESSIONAL POWER TOOLS



# PROFESSIONAL



# EMBARO POWER TOOLS





# EMBARO



**Removable dust filter**

Reduce dust entering the fuselage and damage the internal structure



**Push-button self-locking switch**

Better to resolutely change the grinding wheel when there will be rotation problems



**High carbon brush**

The external carbon brushes are easy to maintain and the high-quality carbon brushes can be used for a long time



## EM-AG-801 ANGLE GRINDER

8PCS

**Power**  
**850W**

Rated voltage/frequency	:220-240V~ 50/60Hz	No load speed	:11000r/min
Input power	:850W	Disc diameter	:100mm

**100 mm** **Power**  
**750W**



### EM-AG-6100 ANGLE GRINDER

8PCS

Rated voltage/frequency	:220-240V~ 50/60Hz
Input power	:750W
No load speed	:11000r/min
Disc diameter	:100mm

**100 mm** **Power**  
**900W**



### EM-AG-805 ANGLE GRINDER

8PCS

Rated voltage/frequency	:220-240V~ 50/60Hz
Input power	:900W
No load speed	:11000r/min
Disc diameter	:100mm

**100 mm** **Power**  
**900W**



**100 mm** **Power**  
**950W**



**EM-AG-806 ANGLE GRINDER** **8PCS**

Rated voltage/frequency	:220-240V~ 50/60Hz
Input power	:900W
No load speed	:11000r/min
Disc diameter	:100mm

**EM-AG-807 ANGLE GRINDER** **8PCS**

Rated voltage/frequency	:220-240V~ 50/60Hz
Input power	:950W
No load speed	:11000r/min
Disc diameter	:100mm

**100 mm** **Power**  
**1150W**



**125 mm** **Power**  
**1300W**



**EM-AG-808 ANGLE GRINDER** **8PCS**

Rated voltage/frequency	:220-240V~ 50/60Hz
Input power	:1150W
No load speed	:11000r/min
Disc diameter	:100mm

**EMPR-AG-125 ANGLE GRINDER** **4PCS**

Rated voltage/frequency	:220-240V~ 50/60Hz
Input power	:1300W
No load speed	:8600r/min
Disc diameter	:125mm

**125 mm** **Power**  
**1200W**



**125 mm** **Power**  
**1500W**



**EM-AG-125 ANGLE GRINDER** **4PCS**

Rated voltage/frequency	:220-240V~ 50/60Hz
Input power	:1200W
No load speed	:8600r/min
Disc diameter	:125mm

**EM-SG-AG-125 STRAIGHT ANGLE GRINDER** **4PCS**

Rated voltage/frequency	:220-240V~ 50/60Hz
Input power	:1500W
No load speed	:8600r/min
Disc diameter	:125mm



**High quality switch**  
Sensitive switch is easy to click, easy to operate



**High carbon brush**  
The external carbon brushes are easy to maintain and the high-quality carbon brushes can be used for a long time



**Sturdy aluminum head shell**  
During operation, the machine is not afraid of bumps and bumps, and the use is more durable



## MARBLE CUTTER

**Power**  
**1050W**

**110 mm** **Power**  
**1050W**



**110 mm** **Power**  
**1200W**



**EM-MC-CM4SA MARBLE CUTTER** **6PCS**

Rated voltage/frequency	:220-240V~ 50/60Hz
Input power	:1050W
No load speed	:11000r/min
Disc diameter	:110mm



**EMPR-MC-CM4SA MARBLE CUTTER** **6PCS**

Rated voltage/frequency	:220-240V~ 50/60Hz
Input power	:1200W
No load speed	:11000r/min
Disc diameter	:110mm



**110 mm** **Power**  
**1350W**



**110 mm** **Power**  
**1400W**



**EM-MC-CM4SB MARBLE CUTTER** **6PCS**

Rated voltage/frequency	:220-240V~ 50/60Hz
Input power	:1350W
No load speed	:11000r/min
Disc diameter	:110mm

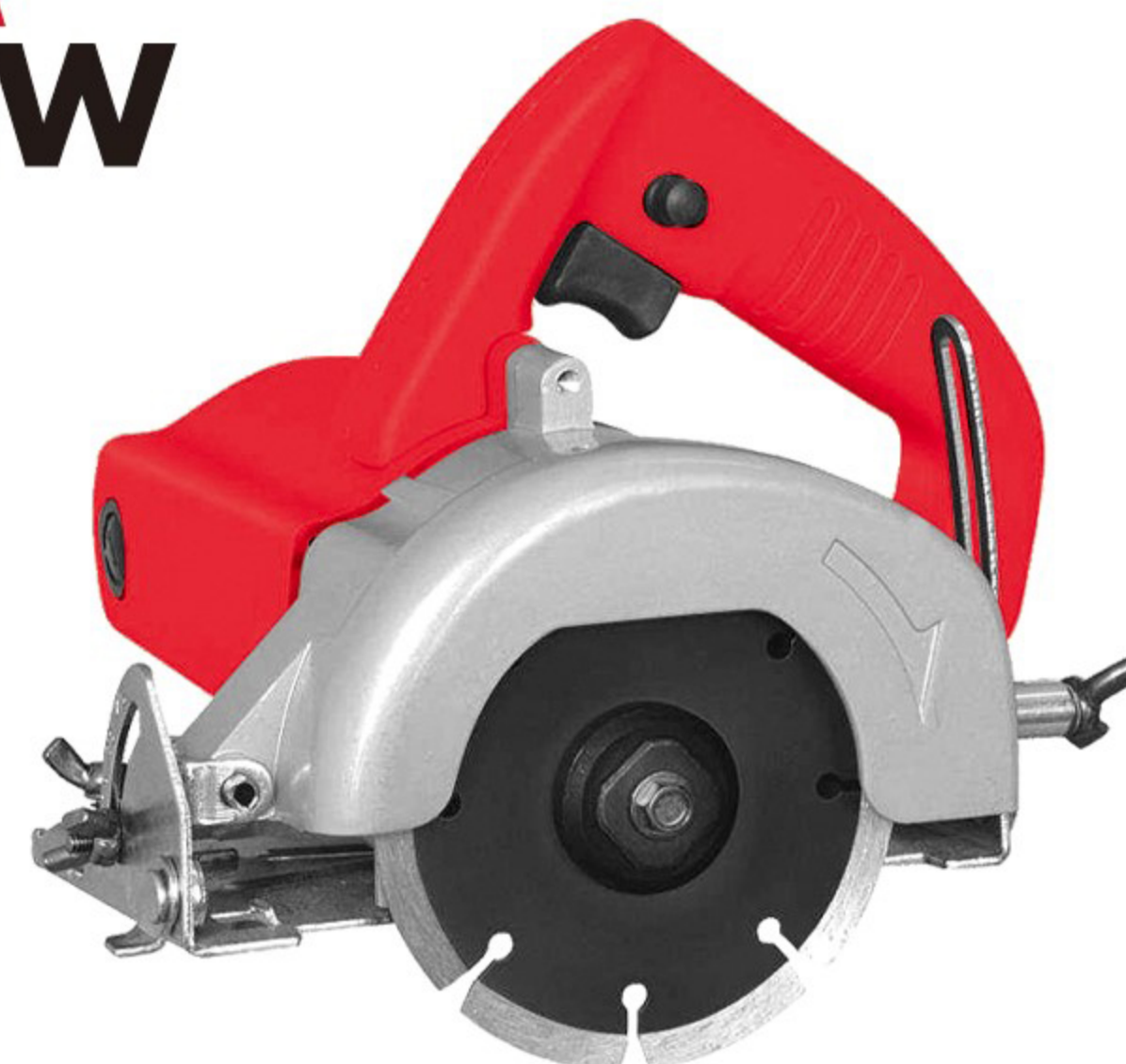
**EMPR-MC-CM4SB MARBLE CUTTER** **6PCS**

Rated voltage/frequency	:220-240V~ 50/60Hz
Input power	:1400W
No load speed	:11000r/min
Disc diameter	:110mm

**125 mm** **Power**  
**1500W**



**125 mm** **Power**  
**1680W**



**EM-MC-CM5HQ MARBLE CUTTER** **6PCS**

Rated voltage/frequency	:220-240V~ 50/60Hz
Input power	:1500W
No load speed	:11000r/min
Disc diameter	:125mm

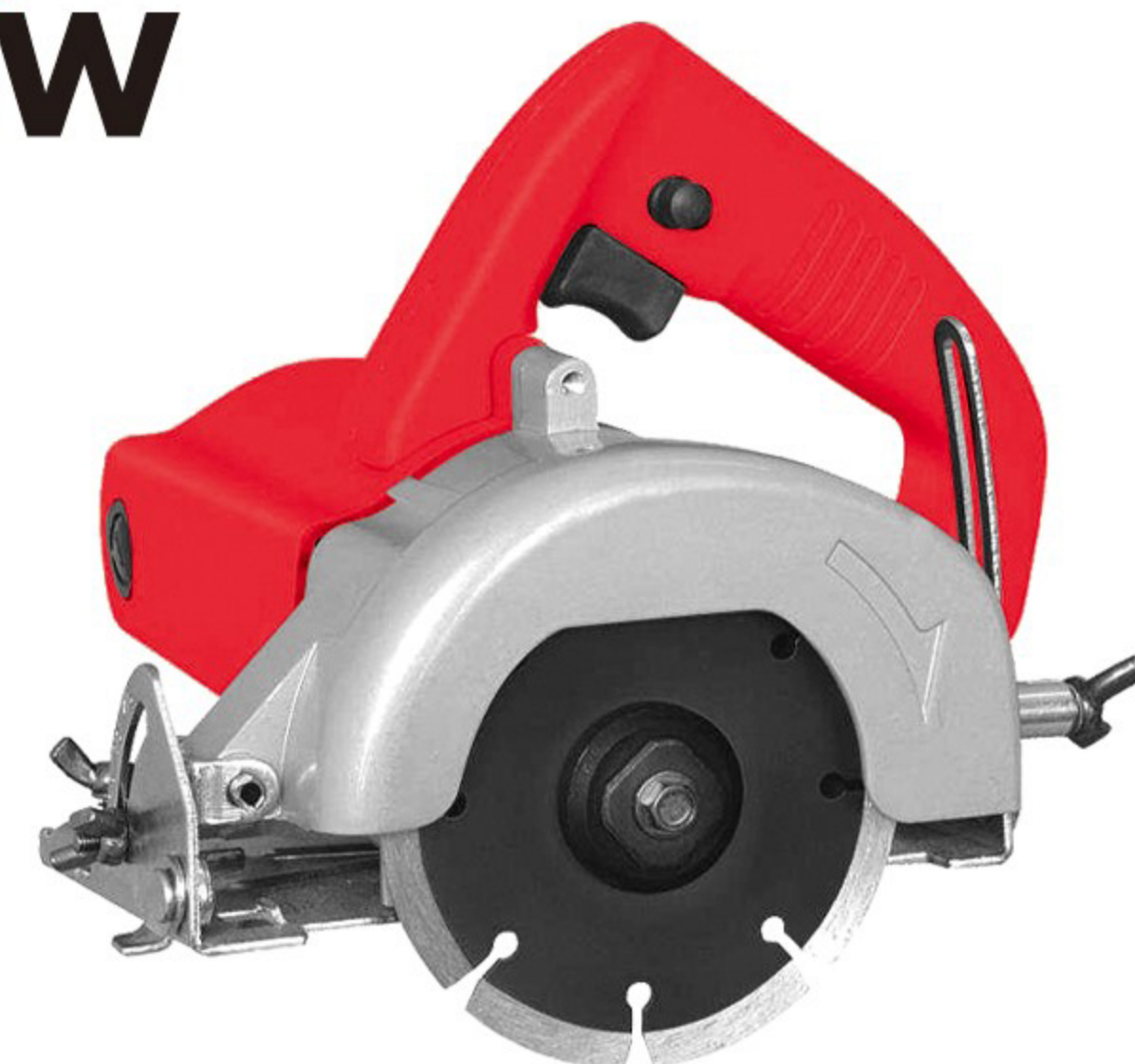
**EM-MC-CM5 MARBLE CUTTER** **6PCS**

Rated voltage/frequency	:220-240V~ 50/60Hz
Input power	:1680W
No load speed	:11000r/min
Disc diameter	:125mm

**125 mm** **Power**  
**2000W**



**150 mm** **Power**  
**1800W**



**EMPR-MC-CM5 MARBLE CUTTER** **4PCS**

Rated voltage/frequency	:220-240V~ 50/60Hz
Input power	:2000W
No load speed	:11000r/min
Disc diameter	:125mm

**EM-MC-CM6 MARBLE CUTTER** **4PCS**

Rated voltage/frequency	:220-240V~ 50/60Hz
Input power	:1800W
No load speed	:11000r/min
Disc diameter	:150mm



**Non-slip handle**  
Handle particle anti-slip treatment for firmer grip and safer operation



**High quality drill chuck**  
Strong clamping force, the operation will not drop the drill, and the operation is safer



**Built-in high-power motor**  
Strong power, blasting and hitting rocks, easy work



## EM-DH-0810 DEMOLITION HAMMER

3PCS

**Power**  
**1350W**

Rated voltage/frequency	:220-240V~ 50/60Hz	Rated Impact	:2900/min
Input power	:1350W		

**Power**  
**1350W**



## EM-DH-0820 DEMOLITION HAMMER

2PCS

Rated voltage/frequency	:220-240V~ 50/60Hz
Input power	:1350W
Rated Impact	:2900/min



**Power**  
**1600W**



## EM-DH-0825 DEMOLITION HAMMER

2PCS

Rated voltage/frequency	:220-240V~ 50/60Hz
Input power	:1600W
Rated Impact	:2900/min





**Power**  
**2000W**



**EM-DH-0835 DEMOLITION HAMMER** 3PCS

Rated voltage/frequency	:220-240V~ 50/60Hz
Input power	:2000W
Rated Impact	:2900/min

**Power**  
**2200W**



**EM-DH-0845 DEMOLITION HAMMER** 3PCS

Rated voltage/frequency	:220-240V~ 50/60Hz
Input power	:2200W
Rated Impact	:2900/min

**Power**  
**1800W**



**EM-DH-65A DEMOLITION HAMMER** 1PCS

Rated voltage/frequency	:220-240V~ 50/60Hz
Input power	:1800W
Rated Impact	:2900/min

**Power**  
**2200W**



**EM-DH-11E DEMOLITION HAMMER** 1PCS

Rated voltage/frequency	:220-240V~ 50/60Hz
Input power	:2200W
Rated Impact	:2900/min

**20 mm** **Power**  
**620W**



**EM-RH-220 ROTARY HAMMER** 5PCS

Rated voltage/frequency	:220-240V~ 50/60Hz
Input power	:620W
No load speed	:0-850r/min
Drill diameter	:20mm

**26 mm** **Power**  
**900W**



**EM-RH-226 ROTARY HAMMER** 5PCS

Rated voltage/frequency	:220-240V~ 50/60Hz
Input power	:900W
No load speed	:0-850r/min
Drill diameter	:26mm



# EMBARO



**Stainless steel chuck**  
Strong clamping force, the operation will not drop the drill,  
and the operation is safer



**Rugged Gearbox**  
During operation, the machine is not afraid of bumps and bumps,  
and the use is more durable



**High quality switch**  
Sensitive switch is easy to click, easy to operate



## EM-DL-2310 ELECTRIC DRILL

10PCS

**Power**  
**350W**

Rated voltage/frequency	:220-240V~ 50/60Hz	No load speed	:11000r/min
Input power	:350W	Drill diameter	:10mm

**10**  
**mm** **Power**  
**450W**



## EM-DL-10RF ELECTRIC DRILL

10PCS

Rated voltage/frequency	:220-240V~ 50/60Hz
Input power	:450W
No load speed	:4800r/min
Drill diameter	:10mm

**13**  
**mm** **Power**  
**550W**



## EM-DL-13B ELECTRIC DRILL

10PCS

Rated voltage/frequency	:220-240V~ 50/60Hz
Input power	:550W
No load speed	:4800r/min
Drill diameter	:13mm

**13 mm** **Power**  
**600W**



**EM-DL-13RE ELECTRIC DRILL**

**10PCS**

Rated voltage/frequency	:220-240V~ 50/60Hz
Input power	:600W
No load speed	:4800r/min
Drill diameter	:13mm



**13 mm** **Power**  
**650W**



**EM-DL-EID13 IMPACT DRILL**

**5PCS**

Rated voltage/frequency	:220-240V~ 50/60Hz
Input power	:650W
No load speed	:4800r/min
Drill diameter	:13mm



**6.5 mm** **Power**  
**280W**



**EM-DL-6A ELECTRIC DRILL**

**10PCS**

Rated voltage/frequency	:220-240V~ 50/60Hz
Input power	:280W
No load speed	:4800r/min
Drill diameter	:6.5mm



**10 mm** **Power**  
**280W**



**EM-DL-SD10B SCREWDRIVER**

**10PCS**

Rated voltage/frequency	:220-240V~ 50/60Hz
Input power	:280W
No load speed	:4800r/min
Drill diameter	:10mm



**10 mm** **Power**  
**320W**



**EM-DL-SD10C SCREWDRIVER**

**10PCS**

Rated voltage/frequency	:220-240V~ 50/60Hz
Input power	:320W
No load speed	:4800r/min
Drill diameter	:10mm



**10 mm** **Power**  
**350W**



**EM-DL-SD10LED SCREWDRIVER**

**10PCS**

Rated voltage/frequency	:220-240V~ 50/60Hz
Input power	:350W
No load speed	:4800r/min
Drill diameter	:10mm



**82 mm** **Power**  
**800W**



**EM-PL-82MM PLANNER**

**4PCS**

Rated voltage/frequency	:220-240V~ 50/60Hz
Input power	:800W
No load speed	:16000r/min
Planning capacity	:82mm



**82 mm** **Power**  
**900W**



**EM-PL-82HQ PLANNER**

**4PCS**

Rated voltage/frequency	:220-240V~ 50/60Hz
Input power	:900W
No load speed	:16000r/min
Planning capacity	:82mm



**82 mm** **Power**  
**750W**



**EM-PL-1900B PLANNER**

**6PCS**

Rated voltage/frequency	:220-240V~ 50/60Hz
Input power	:750W
No load speed	:16000r/min
Planning capacity	:82mm



**90 mm** **Power**  
**1100W**



**EM-PL-90MM PLANNER**

**4PCS**

Rated voltage/frequency	:220-240V~ 50/60Hz
Input power	:1100W
No load speed	:16000r/min
Planning capacity	:90mm



**6 mm** **Power**  
**680W**



**EM-TM-6.35 TRIMMER**

**10PCS**

Rated voltage/frequency	:220-240V~ 50/60Hz
Input power	:680W
No load speed	:26000r/min
Chuck diameter	:6mm



**70 mm** **Power**  
**710W**



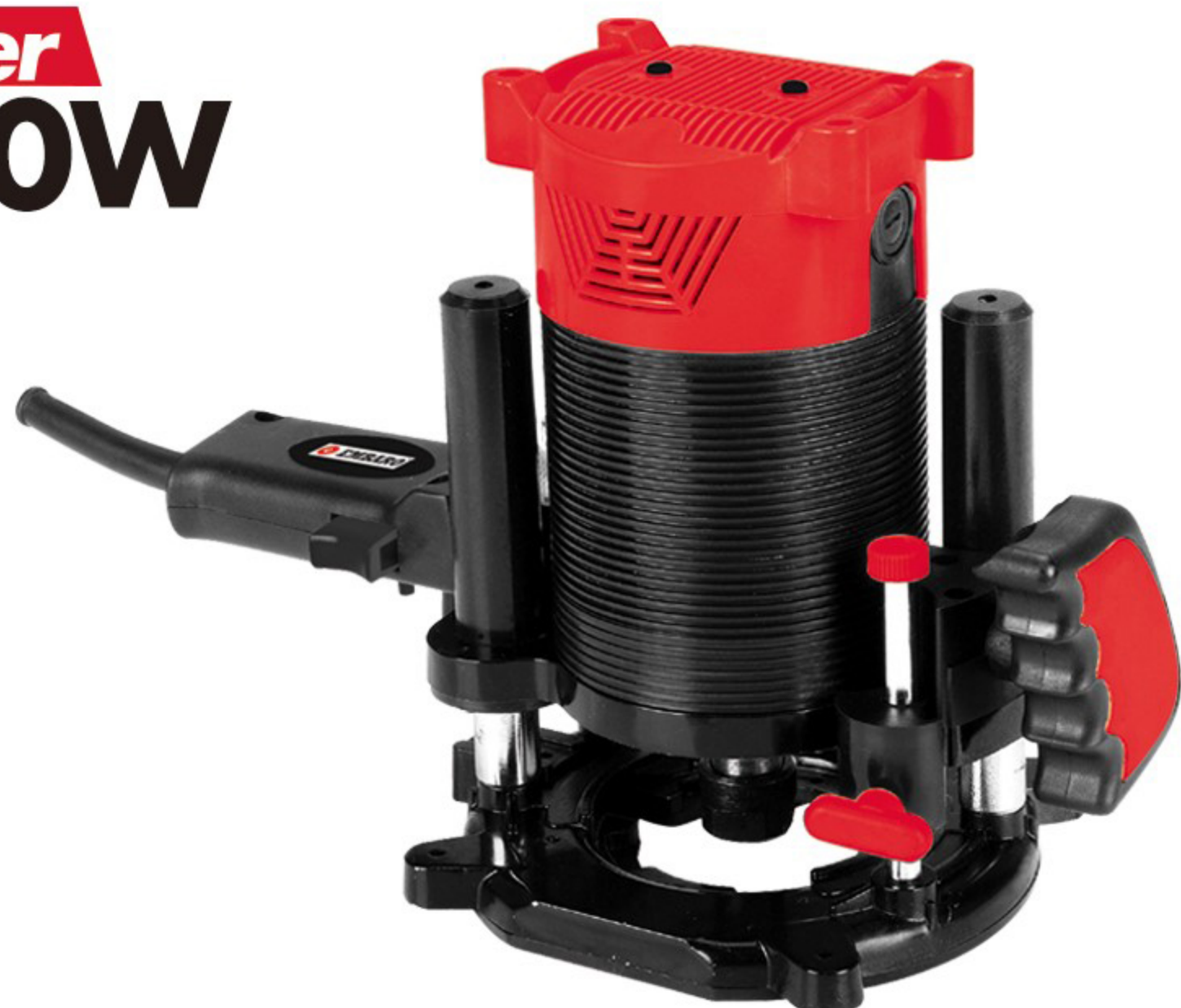
**EM-JS-J70 JIG SAW**

**10PCS**

Rated voltage/frequency	:220-240V~ 50/60Hz
Input power	:710W
No load speed	:0-3000r/min
Collet diameter	:70mm



**12**  
mm **Power**  
**1800W**



**35**  
mm **Power**  
**780W**



**EM-ER-12MM ROUTER**

**2PCS**

Rated voltage/frequency	:220-240V~ 50/60Hz
Input power	:1800W
No load speed	:23000r/min
Collet diameter	:12mm



**EM-VR-CV35 CONCRETE VIBRATOR**

**10PCS**

Rated voltage/frequency	:220-240V~ 50/60Hz
Input power	:780W
No load speed	:4500r/min
Vibrator diameter	:35mm



**160**  
mm **Power**  
**1050W**



**355**  
mm **Power**  
**2200W**



**EM-PM-160 PAINT MIXER**

**5PCS**

Rated voltage/frequency	:220-240V~ 50/60Hz
Input power	:1050W
No load speed	:0-800r/min
Max mixing laddle	:160mm



**EM-CO-355C CHOPSAW**

**1PCS**

Rated voltage/frequency	:220-240V~ 50/60Hz
Input power	:2200W
No load speed	:3800r/min
Blade diameter	:355mm



**355**  
mm **Power**  
**2600W**



**355**  
mm **Power**  
**3800W**



**EMPR-CO-355 CHOPSAW**

**1PCS**

Rated voltage/frequency	:220-240V~ 50/60Hz
Input power	:2600W
No load speed	:3800r/min
Blade diameter	:355mm



**EM-CO-355D CHOPSAW**

**1PCS**

Rated voltage/frequency	:220-240V~ 50/60Hz
Input power	:3800W
No load speed	:3800r/min
Blade diameter	:355mm



**2.8**  
m<sup>3</sup>/min **Power**  
**600W**



**EM-BL-40 BLOWER**

**8PCS**

Rated voltage/frequency	:220-240V~ 50/60Hz
Input power	:600W
No load speed	:0-16000r/min
Air flow	:2.8m <sup>3</sup> /min



**2.8**  
m<sup>3</sup>/min **Power**  
**650W**



**EM-BL-HT1007 BLOWER**

**8PCS**

Rated voltage/frequency	:220-240V~ 50/60Hz
Input power	:650W
No load speed	:0-16000r/min
Air flow	:2.8m <sup>3</sup> /min



**Power**  
**2000W**



**EM-HG-2000 HEAT GUN**

**10PCS**

Rated voltage/frequency	:220-240V~ 50/60Hz
Input power	:2000W
No load speed	:16000r/min
Air flow	: I:250L/min II:500L/min



**180**  
mm **Power**  
**1200W**



**EM-CP-180 CAR POLISHER**

**4PCS**

Rated voltage/frequency	:220-240V~ 50/60Hz
Input power	:1200W
No load speed	:0-3500r/min
Polishing wheel	:180mm



**150**  
bar **Power**  
**1800W**



**EM-CW-288 CAR WASHER**

**2PCS**

Rated voltage/frequency	:220-240V~ 50/60Hz
Input power	:1800W
No load speed	:2800r/min
Pressure	:150bar



**16"** **Power**  
**SAW** **1300W**



**EM-CS-E405 CHAINSAW MACHINE** **4PCS**

Rated voltage/frequency	:220-240V~ 50/60Hz
Input power	:1300W
No load speed	:405m/s
Sawing	:16"

**22** **Power**  
**inch** **58CC**



**EM-CS-58 GASOLINE CHAINSAW** **2PCS**

Displacement	:58CC
Mixed oil ratio	:25:1
Sawing	:22"

**18** **Power**  
**inch** **65CC**



**EM-CS-6518 GASOLINE CHAINSAW** **2PCS**

Displacement	:65CC
Power	:3.0KW
Max Speed	:12000/min
Sawing	:18"

**22** **Power**  
**inch** **65CC**



**EM-CS-6522 GASOLINE CHAINSAW** **2PCS**

Displacement	:65CC
Power	:3.0KW
Max Speed	:12000/min
Sawing	:22"

**2** **Power**  
**STROKE** **72CC**



**EM-EA-72CC EARTH AURGER** **1PCS**

Displacement	:72CC/2 STROKE
Mixed oil ratio	:25:1

**2** **Power**  
**STROKE** **43CC**



**EM-BC-SP-2S-43 BRUSH CUTTER** **1PCS**

Displacement	:43CC/2 STROKE
Mixed oil ratio	:25:1
Rated power	:1.3kw
Idling speed	:7000r/min



## 2 MODE

 *Hammer drill  
Features*

 *Hand drill  
Features*

 *Torque drill  
Features*

Chuck diameter 10mm  
Battery 12V/1 5Ah  
Maximum torque 35Nm

No load speed 1350RPN  
Diameter of the screw M6

**EM-CD-DL12VA CORDLESS DRILL**

10PCS

**Power  
12V**



### keyless chuck

Easy and convenient to install the drill bit, which can better improve work efficiency



### 2nd gear speed switch

Facing different working environments, using different gears can better solve troubles



### Stepless speed switch

No need to adjust, the speed of drilling is determined by the depth of pressing



### Strong battery pack

It can better lock the power, increase the use time of the machine, and provide better working results



**10 mm** **Power 12V**



**EM-CD-DL12V CORDLESS DRILL 10PCS**

Battery	:12V/1.5Ah
Max torque	:35Nm
No load speed	:1350r/min
Chuck diameter	:10mm

**10 mm** **Power 18V**



**EM-CD-DL18V CORDLESS DRILL 10PCS**

Battery	:18V/1.5Ah
Max torque	:35Nm
No load speed	:1350r/min
Chuck diameter	:10mm

**10 mm** **Power 21V**



**EM-CD-DL21V CORDLESS DRILL 10PCS**

Battery	:21V/1.5Ah
Max torque	:35Nm
No load speed	:1350r/min
Chuck diameter	:10mm

**100 mm** **Power 21V**



**EM-CD-AG21V ANGLE GRINDER 6PCS**

Battery	:21V/4.0Ah
Input power	:980W
No load speed	:11000r/min
Disc diameter	:100mm

**10 mm** **Power 21V**



**EM-CD-BW21V BRUSHLESS WRENCH 6PCS**

Battery	:21V/4.0Ah
Max torque	:380Nm
No load speed	:1350r/min
Chuck diameter	:10mm

**135 mm** **Power 12V**

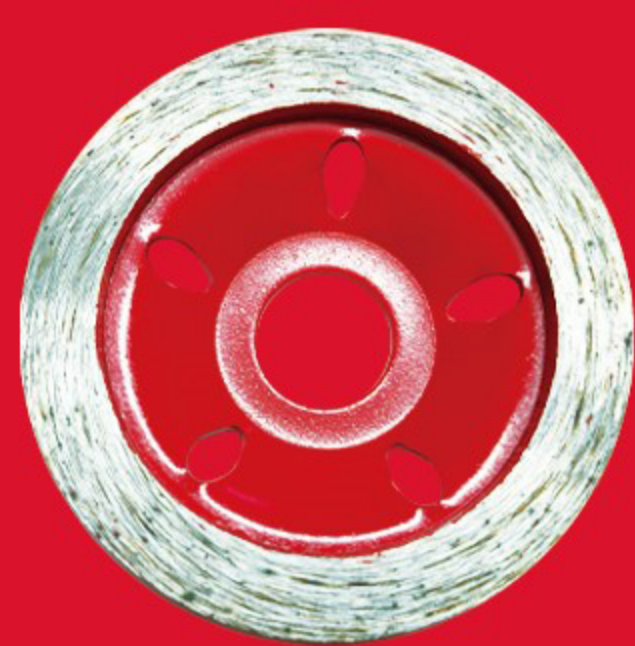


**EM-CD-TPM12V TILE PAVING 6PCS**

Battery	:12V/1.5Ah*2
Weight machine can lift	:60 Kg
Adsorption capacity	:2800-5500t/min
Suction cup diameter	:135mm

# GOLD SERIES

PREMIUM PERFORMANCE



3" RIM CUP WHEEL



3" SEG CUP WHEEL



4" SEG CUP WHEEL



4" RIM



4" SEGMENT



4" TURBO



4" SUPERTHIN TURBO



4" HP CERAMIC (U CUT)



5" RIM



5" SEGMENT



6" SEGMENT



7" SEGMENT



8" SEGMENT



10" SEGMENT



14" SEGMENT

# PRO SERIES

PREMIUM PERFORMANCE



4" RIM



4" SEGMENT



4" SUPERTHIN



4" HP CERAMIC



5" RIM



5" SEGMENT

# SUPER SERIES

PREMIUM PERFORMANCE



4" RIM



4" SEGMENT



5" SEGMENT



# PLATINUM SERIES

PREMIUM PERFORMANCE

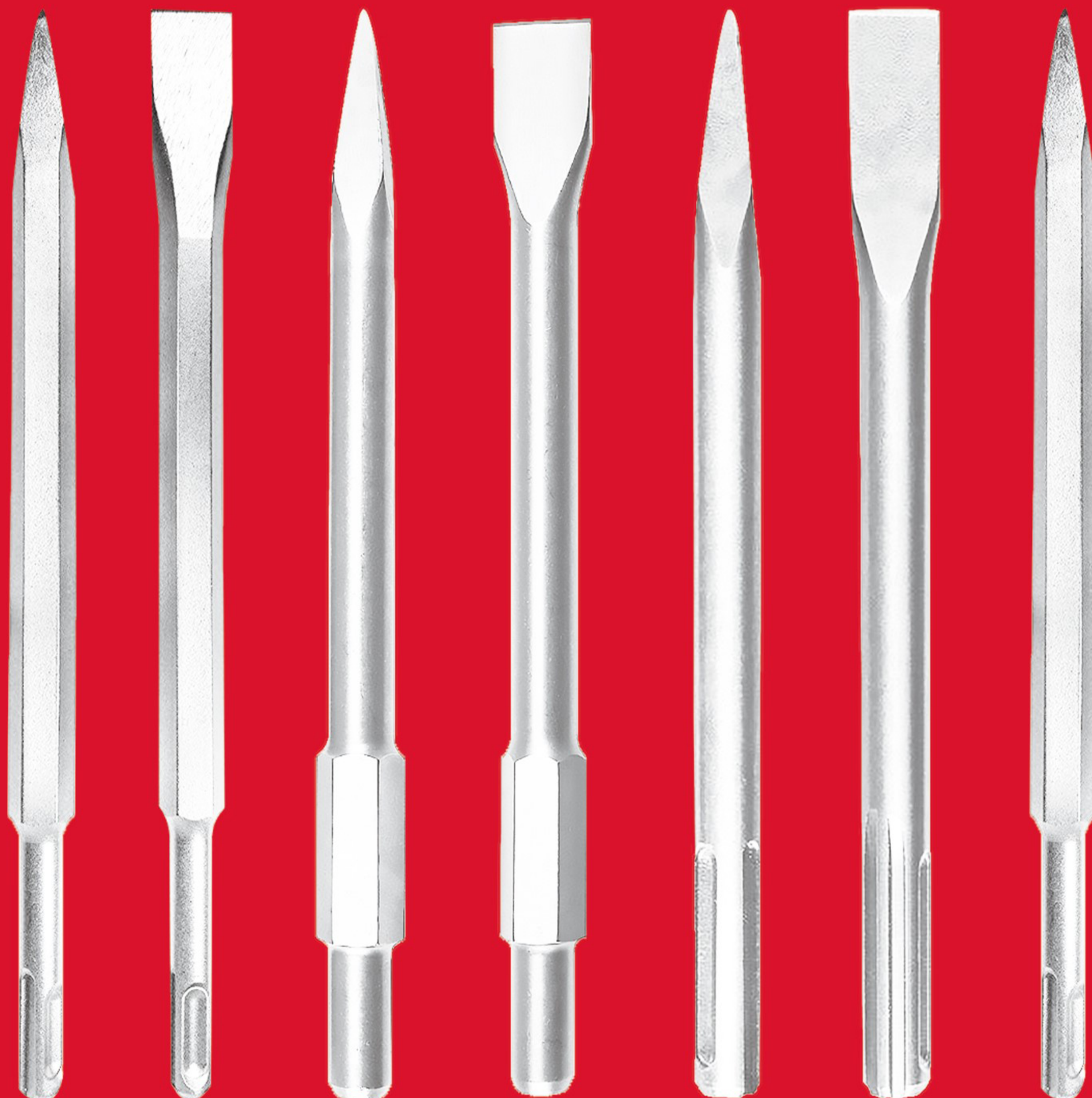


4" HP SEGMENT



5" HP SEGMENT

## CHISELS



EM-CH-14X250XF(2.26)

EM-CH-14X250XP(2.26)

EM-CH-17X280XP(0810)

EM-CH-17X280XF(0810)

EM-CH-17X400XP(0810)

EM-CH-17X400XF(0810)

EM-CH-18X400XP(11E)

EM-CH-18X400XF(11E)

EM-CH-18X600XP(11E)

EM-CH-30X400XP(PH65)

EM-CH-30X410XP(PH65)

EM-CH-30X410XF(PH65)

# DRILL BITS



EM-CB-6X100 CERAMIC

EM-DB-5X110

EM-DB-5X160

EM-DB-6X110

EM-DB-6X160

EM-DB-6.5X110

EM-DB-6.5X160

EM-DB-8X110

EM-DB-8X160

EM-DB-10X110

EM-DB-10X160

EM-DB-10X260

EM-DB-12X160

EM-DB-12X210

EM-DB-12X360

EM-DB-14X160

EM-DB-14X210

EM-DB-14X310

EM-DB-16X160

EM-DB-16X210

EM-DB-16X310

EM-DB-18X260

EM-DB-18X310

EM-DB-18X450

EM-DB-20X310

EM-DB-20X450

EM-DB-22X310

EM-DB-22X450

EM-DB-25X310

EM-DB-25X450



# EMBARO

## TCT (WOOD)



EM-TCT-4X30



EM-TCT-4X40



EM-TCT-5X30



EM-TCT-5X40



EM-TCT-6X40



EM-TCT-6X60



EM-TCT-7X40



EM-TCT-7X60



EM-TCT-8X40



EM-TCT-8X60



EM-TCT-10X40



EM-TCT-10X60



EM-TCT-12X40



EM-TCT-12X60



EM-TCT-14X60

Please maintain the tool regularly, this will ensure the highest performance and longer life of the power tool



**PROFESSIONAL POWER TOOLS**